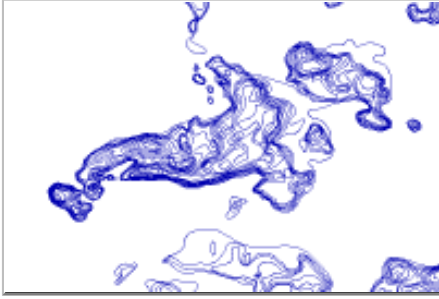


## Lake Contour



**Data format:** SDE Feature Class

**File or table name:** gisvec1.OC.LakeContour

**Coordinate system:** Lambert Conformal Conic

**Theme keywords:** contours, surface topography, hydrography, lakes, waterbodies, inlandWaters, elevation, topography

**Abstract:** A spatial representation of lake depths. This polygon feature class was derived from hard copy maps produced by the State of Michigan Conservation Department. These maps were scanned and digitized to produce this data. The hard copy maps were produced in 1947. Key attributes include the LakeName (Lake name) and Depth (below lake level).

## FGDC and ESRI Metadata:

- [Identification Information](#)
- [Data Quality Information](#)
- [Spatial Data Organization Information](#)
- [Spatial Reference Information](#)
- [Entity and Attribute Information](#)
- [Distribution Information](#)
- [Metadata Reference Information](#)
- [Binary Enclosures](#)

Metadata elements shown with blue text are defined in the Federal Geographic Data Committee's (FGDC) [Content Standard for Digital Geospatial Metadata \(CSDGM\)](#). Elements shown with green text are defined in the [ESRI Profile of the CSDGM](#). Elements shown with a green asterisk (\*) will be automatically updated by ArcCatalog. ArcCatalog adds hints indicating which FGDC elements are mandatory; these are shown with gray text.

## Identification Information:

### Citation:

#### Citation information:

**Originators:** Oakland County Planning and Economic Development

#### Title:

Lake Contour

\***File or table name:** gisvec1.OC.LakeContour

**Publication date:** August, 2007

\***Geospatial data presentation form:** vector digital data

#### Publication information:

**Publisher:** Oakland County

**Online linkage:** [unavailable](#)

**Description:**

**Abstract:**

A spatial representation of lake depths. This polygon feature class was derived from hard copy maps produced by the State of Michigan Conservation Department. These maps were scanned and digitized to produce this data. The hard copy maps were produced in 1947.

Key attributes include the LakeName (Lake name) and Depth (below lake level).

**Purpose:**

The purpose of this feature class is for cartographic output.

The secondary purpose is spatial analysis.

**Supplemental information:**

Not applicable.

**\*Language of dataset:** en

**Time period of content:**

**Time period information:**

**Single date/time:**

**Calendar date:** 1947

**Currentness reference:**

publication date

**Status:**

**Progress:** Complete

**Maintenance and update frequency:** As needed

**Spatial domain:**

**Bounding coordinates:**

**\*West bounding coordinate:** -83.689162

**\*East bounding coordinate:** -83.092651

**\*North bounding coordinate:** 42.869242

**\*South bounding coordinate:** 42.507245

**Local bounding coordinates:**

**\*Left bounding coordinate:** 13306019.329684

**\*Right bounding coordinate:** 13464892.881192

**\*Top bounding coordinate:** 499728.099502

**\*Bottom bounding coordinate:** 369637.061173

**Keywords:**

**Theme:**

**Theme keywords:** contours, surface topography, hydrography, lakes, waterbodies, inlandWaters, elevation, topography

**Access constraints:** <http://www.oakgov.com/gis/assets/docs/EnhancedAccessPolicy.pdf>

**Use constraints:**

<http://www.oakgov.com/gis/assets/docs/GISDataPolicies.pdf>

**Point of contact:**

**Contact information:****Contact organization primary:****Contact person:** Anita Campbell**Contact organization:** Oakland County Application Services**Contact position:** GIS Data Services Supervisor**Contact address:****Address type:** mailing address**Address:**

1200 N Telegraph Rd, Bldg 49W

**City:** Pontiac**State or province:** MI**Postal code:** 48341**Country:** US**Contact voice telephone:** 248.858.2388**Contact facsimile telephone:** 248.452.9128**Contact electronic mail address:** campbella@oakgov.com**Hours of service:** 8:30 a.m. to 5:00 p.m.**\*Native dataset format:** SDE Feature Class**\*Native data set environment:**

Microsoft Windows XP Version 5.1 (Build 2600) Service Pack 3; ESRI ArcCatalog 9.3.1.1850

[Back to Top](#)

---

**Data Quality Information:****Lineage:****Process step:****Process description:**

Obtained scanned copies of original print maps from State of Michigan

**Process step:****Process description:**

Rectified individual maps to 2005 aerial photos

**Process step:****Process description:**

Digitized contours

**Process step:****Process description:**

Used hydro coverage to label contour lines based on lake name

**Process step:****Process description:**

Dataset copied.

**Source used citation abbreviation:**

Server=oakgis05; Service=5152; Database=gisvec1; User=oc;  
Version=sde.DEFAULT

**Process step:**

**Process description:**

Dataset copied.

**Process date:** 20090629

**Process time:** 09311400

**Source used citation abbreviation:**

Server=Inddtlg5q; Service=5152; Database=gisvec1; User=oc;  
Version=sde.DEFAULT

[Back to Top](#)

---

## Spatial Data Organization Information:

\***Direct spatial reference method:** Vector

**Point and vector object information:**

**SDTS terms description:**

\***Name:** gisvec1.OC.LakeContour

\***SDTS point and vector object type:** String

\***Point and vector object count:** 1669

**ESRI terms description:**

\***Name:** gisvec1.OC.LakeContour

\***ESRI feature type:** Simple

\***ESRI feature geometry:** Polyline

\***ESRI topology:** FALSE

\***ESRI feature count:** 1669

\***Spatial index:** TRUE

\***Linear referencing:** FALSE

[Back to Top](#)

---

## Spatial Reference Information:

**Horizontal coordinate system definition:**

**Coordinate system name:**

\***Projected coordinate system name:**

NAD\_1983\_StatePlane\_Michigan\_South\_FIPS\_2113\_IntlFeet

\***Geographic coordinate system name:** GCS\_North\_American\_1983

**Planar:**

**Map projection:**

\***Map projection name:** Lambert Conformal Conic

**Lambert conformal conic:**

\***Standard parallel:** 42.100000

\***Standard parallel:** 43.666667

\***Longitude of central meridian:** -84.366667

\***Latitude of projection origin:** 41.500000

\*False easting: 13123359.580052

\*False northing: 0.000000

**Planar coordinate information:**

\*Planar coordinate encoding method: coordinate pair

**Coordinate representation:**

\*Abscissa resolution: 0.000064

\*Ordinate resolution: 0.000064

\*Planar distance units: international feet

**Geodetic model:**

\*Horizontal datum name: North American Datum of 1983

\*Ellipsoid name: Geodetic Reference System 80

\*Semi-major axis: 6378137.000000

\*Denominator of flattening ratio: 298.257222

**Vertical coordinate system definition:**

**Altitude system definition:**

\*Altitude resolution: 1.000000

\*Altitude encoding method: Explicit elevation coordinate included with horizontal coordinates

[Back to Top](#)

---

**Entity and Attribute Information:**

**Detailed description:**

\*Name: gisvec1.OC.LakeContour

**Entity type:**

\*Entity type label: gisvec1.OC.LakeContour

\*Entity type type: Feature Class

\*Entity type count: 1669

**Attribute:**

\*Attribute label: SHAPE.len

\*Attribute alias: OBJECTID

\*Attribute definition:

Internal feature number.

\*Attribute definition source:

ESRI

\*Attribute type: OID

\*Attribute width: 4

\*Attribute precision: 10

\*Attribute scale: 0

**Attribute domain values:**

\*Unrepresentable domain:

Sequential unique whole numbers that are automatically generated.

**Attribute:**

\*Attribute label: Depth

\*Attribute alias: DEPTH

**Attribute definition:**

Number of feet below lake level

**Attribute definition source:**

hard copy maps

\***Attribute type:** String

\***Attribute width:** 8

\***Attribute precision:** 0

\***Attribute scale:** 0

**Attribute domain values:**\***Unrepresentable domain:**

Sequential unique whole numbers that are automatically generated.

**Attribute:**

\***Attribute label:** MapDate

\***Attribute alias:** MAPDATE

**Attribute definition:**

Year hard copy map was produced

**Attribute definition source:**

Hard copy map

\***Attribute type:** String

\***Attribute width:** 10

\***Attribute precision:** 0

\***Attribute scale:** 0

**Attribute:**

\***Attribute label:** SHAPE

\***Attribute alias:** SHAPE

\***Attribute definition:**

Feature geometry.

\***Attribute definition source:**

ESRI

\***Attribute type:** Geometry

\***Attribute width:** 4

\***Attribute precision:** 0

\***Attribute scale:** 0

**Attribute domain values:**\***Unrepresentable domain:**

Coordinates defining the features.

**Attribute:**

\***Attribute label:** Shape

\***Attribute alias:** LAKENAME

\***Attribute definition:**

Feature geometry.

\***Attribute definition source:**

ESRI

\***Attribute type:** String

\***Attribute width:** 100

\***Attribute precision:** 0

\***Attribute scale:** 0

**Attribute domain values:****\*Unrepresentable domain:**

Coordinates defining the features.

**Attribute:****\*Attribute label:** LakeName**\*Attribute alias:** SHAPE.len**Attribute definition:**

Name of the lake according to Oakland County hydrography

**\*Attribute type:** Double**\*Attribute width:** 0**\*Attribute precision:** 0**\*Attribute scale:** 0[Back to Top](#)

---

**Distribution Information:****Distributor:****Contact information:****Contact organization primary:****Contact person:** Erick Phillips**Contact organization:** Oakland County One Stop Shop**Contact position:** Supervisor**Contact address:****Address type:** mailing and physical address**Address:**

2100 Pontiac Lake Rd. Bldg. 41W

**City:** Waterford**State or province:** MI**Postal code:** 48328-0412**Country:** US**Contact voice telephone:** 248.858.4070**Contact facsimile telephone:** 248.858.1080**Contact electronic mail address:** phillipse@oakgov.com**Hours of service:** 9:00 a.m. to 4:00 p.m.**Resource description:** Offline Data**Standard order process:****Digital form:****Digital transfer information:****Format name:** Shapefiles, .tiff and MrSID**\*Transfer size:** 8.086**\*Dataset size:** 8.086**Digital transfer option:**

**Online option:**  
**Computer contact information:**  
**Network address:**

**Offline option:**  
**Offline media:** CD-ROM

**Fees:** Varies by data type and agent.

**Ordering instructions:**

Contact Erick Phillips of the One Stop Shop by phone.

**Turnaround:** 24 hrs.

[Back to Top](#)

---

## Metadata Reference Information:

\***Metadata date:** 20090821

\***Language of metadata:** en

**Metadata contact:**

**Contact information:**

**Contact organization primary:**

**Contact person:** Anita Campbell

**Contact organization:** Oakland County Application Services

**Contact position:** GIS Data Services Supervisor

**Contact address:**

**Address type:** mailing address

**Address:**

1200 N Telegraph Rd, 49W

**City:** Pontiac

**State or province:** MI

**Postal code:** 48341

**Country:** US

**Contact voice telephone:** 248.858.2388

**Contact facsimile telephone:** 248.452.9128

**Contact electronic mail address:** campbella@oakgov.com

**Hours of service:** 8:30 a.m. to 5:00 p.m.

\***Metadata standard name:** FGDC Content Standards for Digital Geospatial Metadata

\***Metadata standard version:** FGDC-STD-001-1998

\***Metadata time convention:** local time

**Metadata extensions:**

\***Online linkage:** <http://www.esri.com/metadata/esriprof80.html>

\***Profile name:** ESRI Metadata Profile

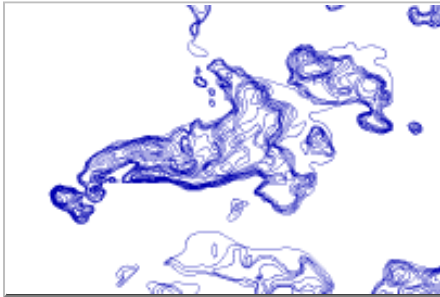
[Back to Top](#)

---

## Binary Enclosures:

Thumbnail:

Enclosure type: Picture



[Back to Top](#)